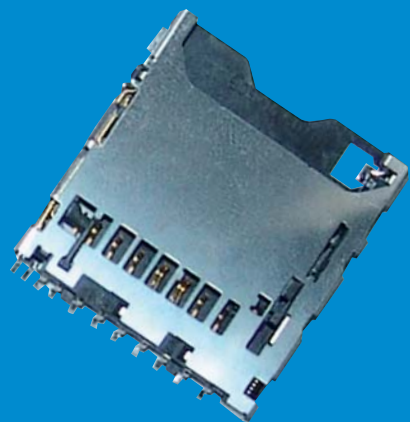


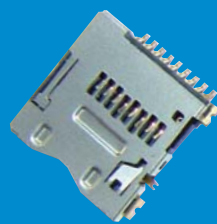
# The Best of Yamaichi's Card Readers

YAMAICHI

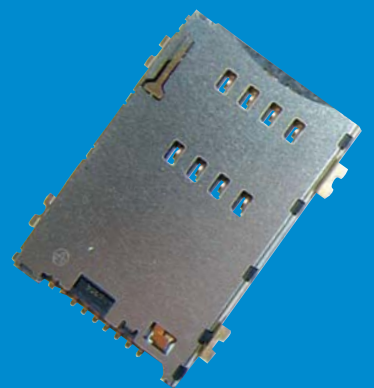
YAMAICHI



SD/MMC



μSD



SIM

# THE BEST OF...

Yamaichi offers a wide product range of Card readers for all main Flash Memory Card types as well as for SIM Cards. This high variety from Yamaichi Electronics is able to fulfil the customer's requirements in individual applications. Different technologies offer a lot of advantages.

We would like to give you an short overview about some of our most interesting products out of a very impressive portfolio of card readers.

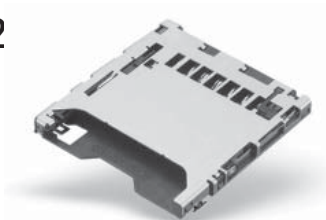
## SD/MMC Card Readers

### Series FPS FPS009-2409-0



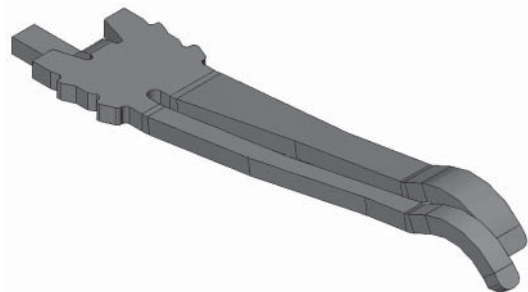
- Push/Push type
- Low profile version
- Top mount
- Card detection switch, write protection
- Wide temperature range: -25°C to +85°C
- Dimensions 28.00W x 30.50L x 2.80Ht

### Series FPS FPS009-2602



- Push/Push typ
- Reversed mount
- Low profile
- Card detection switch, write protection
- Wide temperature range: -25°C to +85°C
- Dimensions: 28.00W x 29.00L x 2.80Ht

## OUR SPECIAL FEATURE

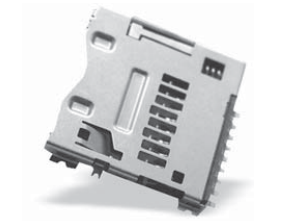


- Two point contacts  
(Power contacts #3 and #4) provides a high security against electrical interruption

## μSD Card Readers

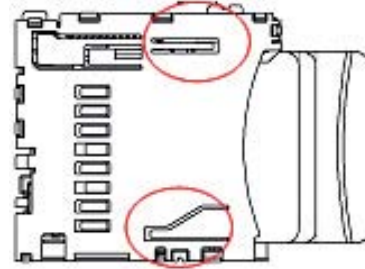
### Series PJS PJS008-2003-0

- Push/Push type
- Reversed mounted
- Low Profile
- Dimensions: 14.5/15.6W x 14.8/15.6L x 1.85Ht



### OUR SPECIAL FEATURES

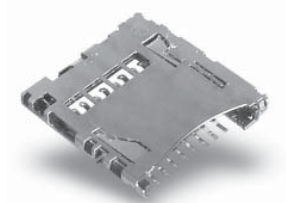
- Card jump out prevention independent from card thickness



- Static discontinuity prevention due to Vcc contact

### Series PJS PJS008-2100-\*

- Push/Push type
- Top mount
- Dimensions: 14.20W x 16.20L x 1.50Ht



### OUR SPECIAL FEATURE

- Super low profile with a height of only 1.50mm

## SIM Card Readers

### Series FMS FMS006Z-2\*00\*-\*

- Push/Push type
- Top and Reversed mount
- With and without switch
- Dimensions: 19.25W x 26.50L x 1.50Ht



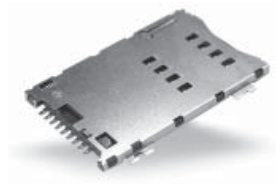
### OUR SPECIAL FEATURES

- One reader available in different versions
- Reliable design, more than 3.5 Million sold pieces

## Latest News

### Series FMS FMS008-6001-0

- Push/Push type
- 8 pins
- Top mounted
- Dimensions: 18.70W x 27.90L x 1.50Ht

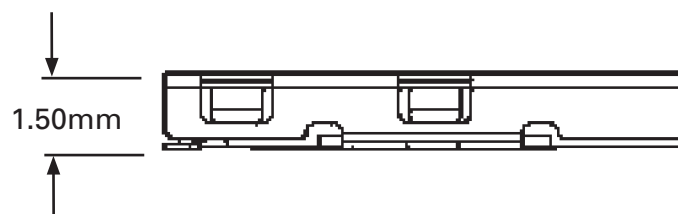
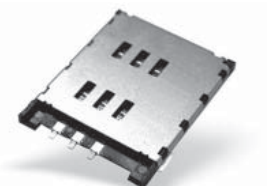


### OUR SPECIAL FEATURES

- Super low profile with a height of only 1.50mm

### Series FMS FMS006-5000-0

- Manual type
- 6 pins
- Top mounted
- Dimensions: 17.300W x 21.10L x 1.50Ht



## Card Overview

### Card Product Range

Yamaichi's solution for your applications

SD/MMC - Cards

Series FPS



miniSD - Cards

Series NMS



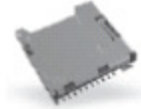
MicroSD - Cards

Series PJS



MicroMMC - Cards

Series PGS



SIM - Cards

Series FMS



Compact Flash - Cards

Series CF



SmartMedia - Cards

Series CN015



PCMCIA - Cards

Series CNS/CNT



Combo Card Readers

Series FRS & JCS

